

AM DROP OFF / PM PICK UP PLAN

DreamHouse 'Ewa Beach Public Charter School

Kalaeloa, HI | SY21-22

PURPOSE OF THIS DOCUMENT

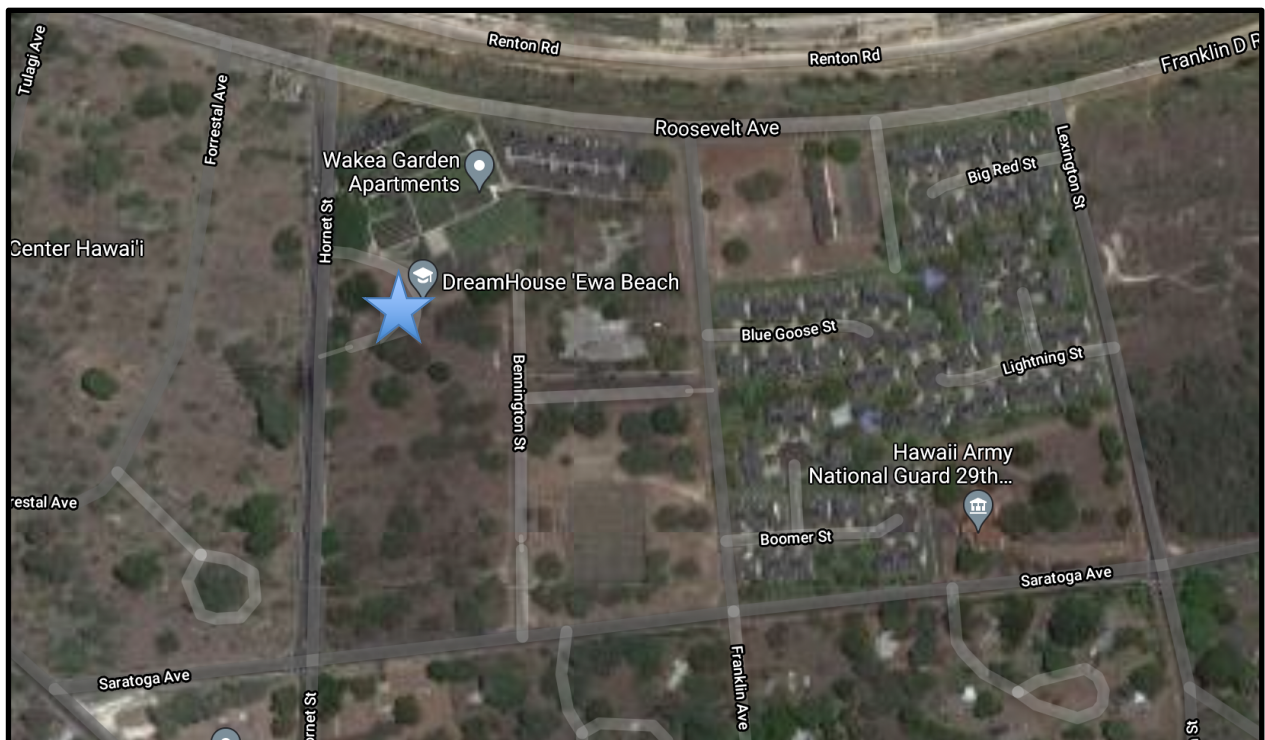
Share with families, staff, and public the traffic flow and operational expectations to ensure smooth, safe, effective vehicular traffic in the DreamHouse vicinity in Kalaeloa.

VISION

Smooth, safe, effective AM drop off and PM pick up for 100% of DreamHouse students.

MAP OF VICINITY

DreamHouse 'Ewa Beach is located at 91-1245 Franklin D. Roosevelt Avenue - A, on the makai side of the Wākea Garden Apartments, accessible from Hornet Street. Hornet Street can be effectively accessed from "Roosevelt Ave" (mauka of school) or Saratoga Ave (makai of school).



TIMING

Drop off is any time between 7AM - 7:45AM, with entrance to the building beginning at 7:50AM and a class start time of 8AM. Pick up is at 3PM every day except Wednesday, which is 2PM.

KEY TRAFFIC PATTERNS & ACTIVE STREETS

300 children will attend DreamHouse in the 2021-22 school year, making it imperative that smooth, safe, effective AM drop off and PM pick up traffic flow is communicated and followed by all stakeholders involved.



AM DROP OFF

We welcome all families, grades 6, 7, and 8, to drop off their child at any of the following three options.

Options:

- DreamHouse Turnaround
- Hornet Ave
- Saratoga Ave

Primary Drop Off: DreamHouse Turnaround

All families are welcome to drop their child off in the DreamHouse turnaround off of Hornet Ave.

- Please only drop off on the right side of the turnaround, child exiting the vehicle from the passenger (right) side, directly to the sidewalk;
- Slowly pull away, keeping aware of blind spots and additional vehicles in the turnaround.

Secondary Drop Off: Hornet Ave

All families are welcome to drop their child off on the Hornet Ave sidewalk and allow them to walk onto campus.

- Please take care when pulling over, dropping off, and merging; please do this only from the passenger side so as not to interfere with traffic flow, and to ensure children DO NOT have to cross Hornet Ave.

Tertiary Drop Off: Saratoga Ave

All families are welcome to drop their child off on Saratoga Ave, near the tennis courts, between Franklin St and Hornet Ave.

- Please take care when pulling over, dropping off, and merging as vehicles sometimes travel quickly during morning commute;
- Utilize the bike lane and grass area if need be;

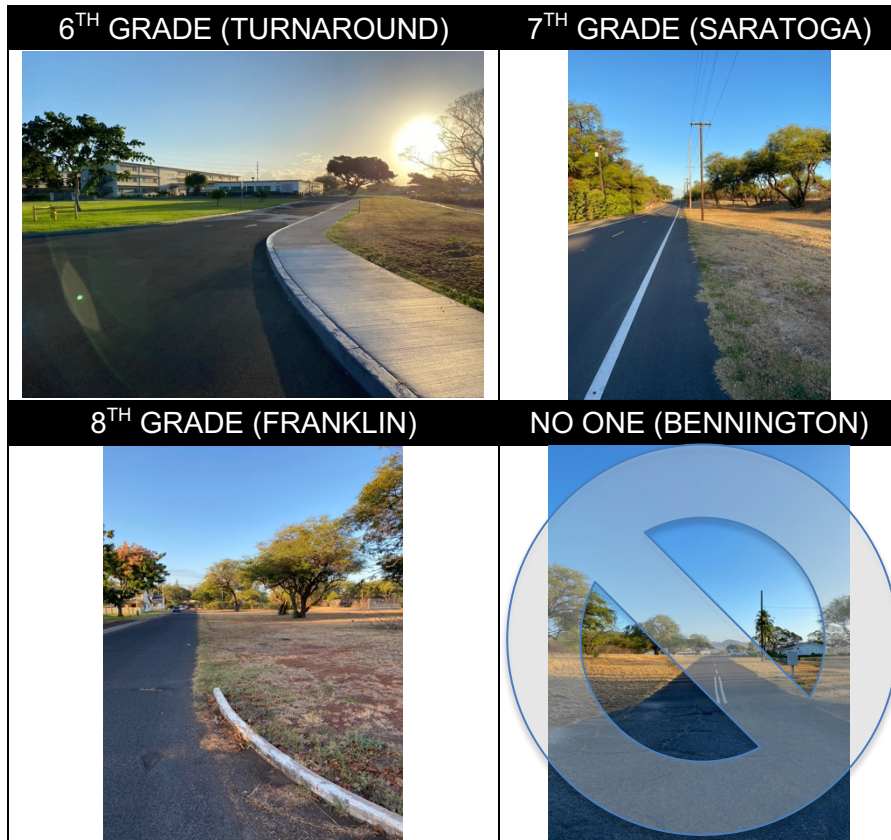
PM PICK UP

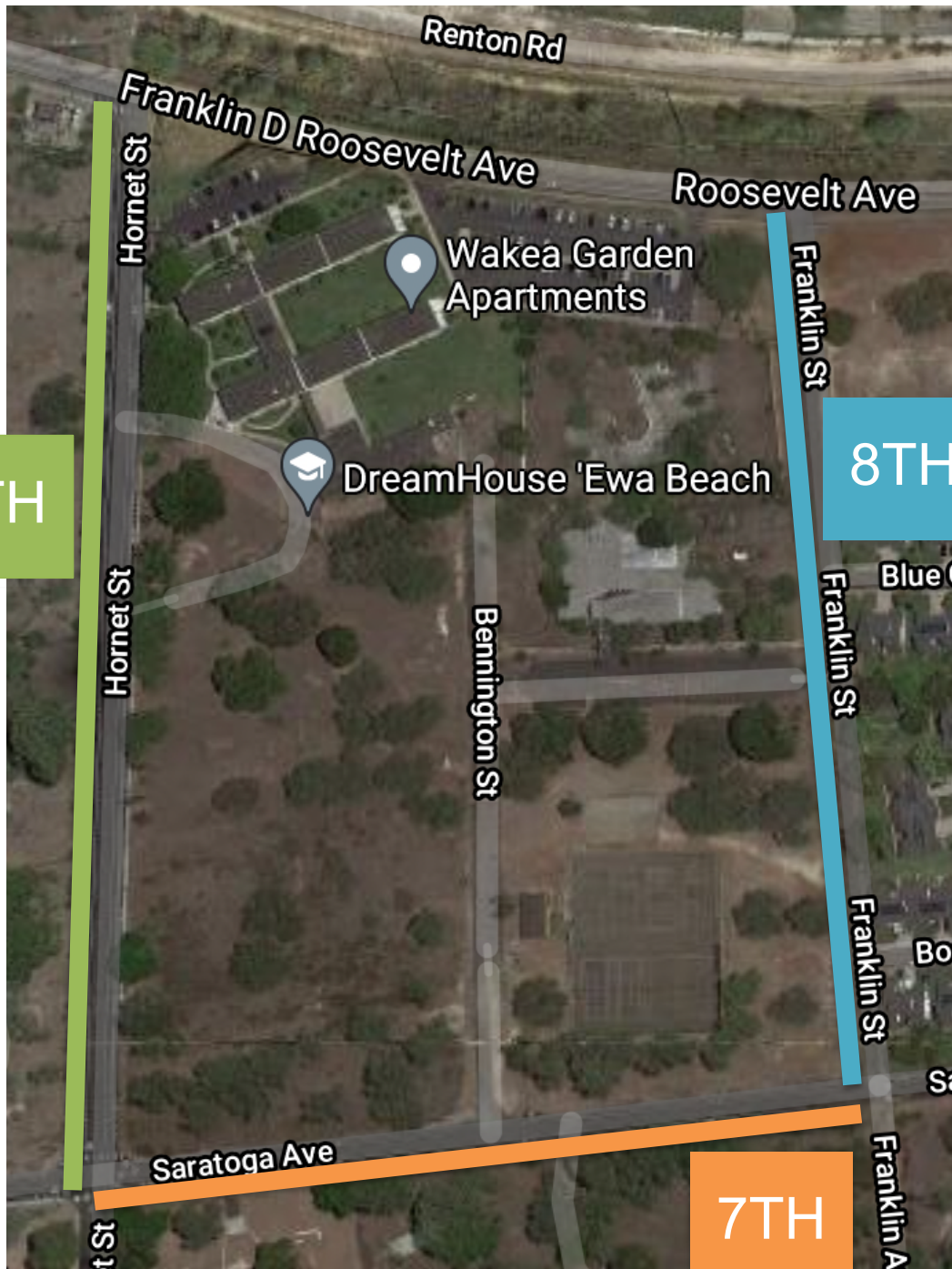
The following pick up streets will be utilized for smooth, safe, effective pick up of students:

- Grade 6: Hornet Ave & DreamHouse Turnaround
- Grade 7: Saratoga Ave
- Grade 8: Franklin St

In order to optimize the surrounding street footprint and ensure a safe, effective traffic pattern for our 300 families, please follow the PICK UP MAP below on a daily basis and unless communicated otherwise. Student grades will walk towards these three, separate streets at 3PM school release in order to maximize efficiency and reduce traffic congestion in the community.

GRADE	PICK UP
6th Grade	DreamHouse Turnaround
7th Grade	Saratoga Ave
8th Grade	Franklin St





- Please utilize bike and breakdown lanes, pull over on right hand side as much as possible;
- Please do not begin staging (parking to wait) until 2:45PM at the earliest, so as not to block traffic and ensure smooth operations upon school release and pick up
- Please take care when pulling over, dropping off, and merging;

- Please ensure that you are ONLY parking on these three streets for pick up as this is what will be communicated to all parents, students, neighbors, traffic enforcement and surrounding stakeholders in the community.

SUGGESTED EXITS AND TRAFFIC FLOW AFTER PICK UP

Please see below for suggested traffic flow upon picking up your child to minimize congestion leaving Kalaeloa. Given construction on the “Costco entrance” side of Kalaeloa, and the difficulty of taking a left onto Franklin D. Roosevelt Ave. from Hornet, we recommend families utilize three exit points and a right turn onto Franklin D. Roosevelt Ave. This will significantly reduce traffic congestion, wait time at stop signs, and minimize risk of left hand turns onto the busy Franklin D. Roosevelt Ave.

GRADE	PICK UP	TO LEAVE
6th Grade	DreamHouse Turnaround	<ul style="list-style-type: none"> ● Exit turnaround onto Hornet ● Right on Franklin D. Roosevelt Ave.
7th Grade	Saratoga Ave	<ul style="list-style-type: none"> ● Continue west on Saratoga Ave ● Right on Boxer Rd, right on Tulagi Ave, right on Franklin D. Roosevelt Ave.
8th Grade	Franklin St	<ul style="list-style-type: none"> ● Continue Makai on Franklin St ● Left on Saratoga Ave, left on Lexington St, right on Franklin D. Roosevelt Ave.

REMINDERS

- Please DO NOT use Bennington Street as a drop off / pick up point
- Please take care in the turnaround
- Please actively pull to allow for turnaround optimization
- Please do not drive thru, drop off, or pick up in Wākea Garden Apartments parking lot

CONTACT

Contact Coach Alex at alexteece@dreamhousewabeach.org or (808) 437-7772 with any questions, concerns, feedback, or suggested adjustments. This is our first year at full capacity in Kalaeloa. Mahalo for your patience, support, and partnership.