

The way forward.

DreamHouse 'Ewa Beach Public Charter School

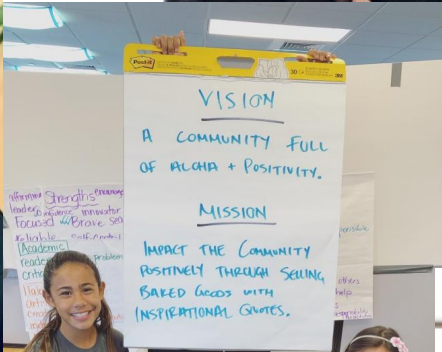
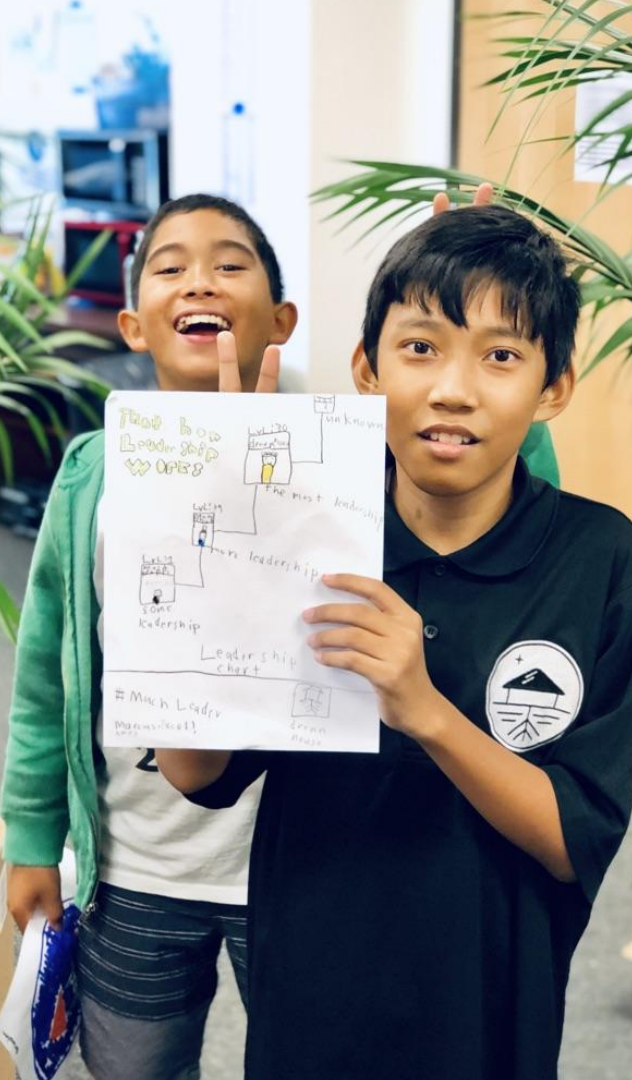
October 2021













CLASS OF 2026 UPDATE

Vision

Facilities (Then/Now)

Extracurriculars

Story Overview

Facilities (Future)

Internships

Growth Trajectory

Courses

Q&A

Athletics

College Enrollment

VISION



Vision

DREAMHOUSE 'EWA BEACH Public Charter School will become a leadership-focused public education pillar in 'Ewa, Kalaeloa, Kapolei, and Leeward communities.

Through unique partnerships and innovation, DreamHouse and aligned organizations will create a pathway for homegrown leaders to lead, serve, and impact our local community.



STORY OVERVIEW



The DreamHouse Story: Part I (2012-2018)

In November 2012, a group of educators, parents, and community leaders gathered together to dream: ***what if we built a school, from scratch, and designed every aspect around empowering children from the westside to become leaders for our island community?***

So began a 7-year journey to imagine, design, construct, and launch DreamHouse.



MAJOR HURDLES & WINS



Application denied.

It took five years total to get the DreamHouse application approved by the State of Hawai'i and to finally become a charter school.

100k in 30 days.

Approval for our application was contingent on fundraising, from scratch, before we had kids, a team, or a school.

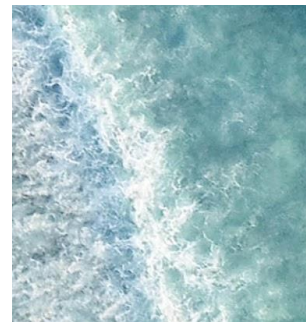


1-Year Delay.

Because we could not find a suitable facility to begin, we had to delay a year which was a major blow to our momentum and support.

Federal Award Win.

\$567,804 was awarded by the US DOE as part of a competitive program that made it possible for DREAMHOUSE to open.





The DreamHouse Story: Part II (2019-2020)

Alexander & Baldwin donates 3,400 square feet of office space for our 100-student 6th grade to begin with 11 staff and a small, two-room school site in 'Ewa Beach - DREAMHOUSE IS BORN.





The DreamHouse Story: Part III (2020-now)

We doubled in size and added a grade into the pandemic... then, added another grade (8th) as we welcomed 100 new 6th grade students in to become 300-student middle school (grade 6, 7, and 8) in our grown Kalaeloa site.

We are writing the next chapter of our story.



GROWTH TRAJECTORY



Growth Trajectory

DreamHouse 'Ewa Beach Launches

After nearly 7 years of planning and development, DreamHouse opens its doors to an inaugural 6th grade class of 100 families.

Students: 100

Middle School Full Capacity

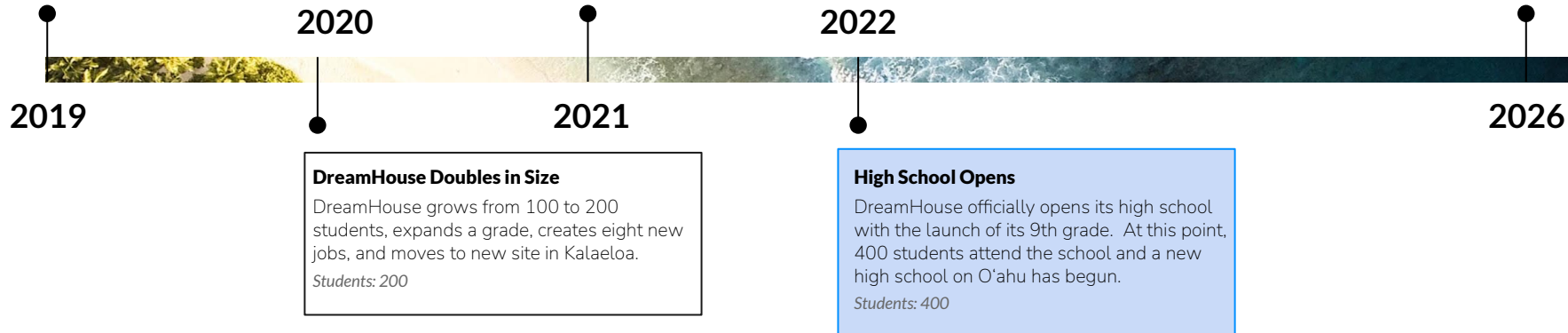
The school adds an 8th grade and is at full capacity at its initial Kalaeloa site.

Students: 300

First Graduating Class

After a linear, 7-year growth trajectory, DreamHouse reaches terminal capacity and graduates its first class of seniors in 2026.

Students: 700



ATHLETICS

50%

Over half of student leaders at DreamHouse are interested in, compete in, or are affiliated with athletics in some aspect.





ATHLETICS

Per State Law, all students at public charter schools can (and do) participate with their home district DOE high school.

§302D-31 Athletics. The department shall provide students at charter schools, including students enrolled at charter schools whose curriculum incorporates virtual education, **with the same opportunity to participate in athletics as is provided to students at department schools.** If a student at any charter school wishes to participate in a sport for which there is no program at the charter school, the department shall allow that student to participate in a comparable program at the department school in the service area in which the student resides. All charter school students participating in athletics shall abide by all rules, regulations, and policies of the athletic league, association, and program applicable to the department school in whose athletic program the student is participating. [L 2012, c 130, pt of §2; am L 2013, c 159, §14; am L 2014, c 99, §21]



ATHLETICS

Per State Law, all students at public charter schools can (and do) participate with their home district DOE high school.

We love athletics!

Once COVID is no longer an immediate threat, we will implement middle school intramurals (basketball, volleyball, softball, tennis, etc.).

Furthermore, once we can field teams (likely a few years into our high school), we would like to commit to 1-2 sports in both the men's division and women's division of OIA.

We are not there just yet... and until we are, we are supportive of our student leaders participating as student athletes at local high schools.

DreamHouse education, leadership, and degree. Local high school athletics. The best of both worlds.

FACILITIES (THEN/NOW)





FROM
THEN:







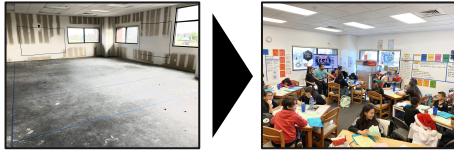
**TO
NOW.**

The Facilities Plan

1

2019-2020: Launch Year

Rent 3,400 sq ft of office space from ALEXANDER & BALDWIN in Laulani Village to build a tiny, temporary school site to launch DreamHouse 'Ewa Beach 6th Grade.



2

July 2020: Moved to Kalaeloa

Through an innovative partnership, HUNT COMPANIES builds out \$4MM renovation to old, military structure in Kalaeloa to serve as growth space for school.



3

July 2021: Add modulators to grow and develop high school plans.

With a growing waiting list and a projected 400 student enrollment, a new site will be required to house the school as we grow



Concept above.



FACILITIES (FUTURE)

100% Full.

Due to unprecedented growth and demand for spots at DreamHouse, we remain in constant need for space to grow, both temporarily and permanently.





Demand

There is growing demand for a new public option in the Kalaeloa, Kapolei, 'Ewa community. Families, especially Native Hawaiian, are moving to the community and are in search of alternative options from traditional, existing DOE schools. We expect to see a growing demand as our school continues to gain momentum and exposure.

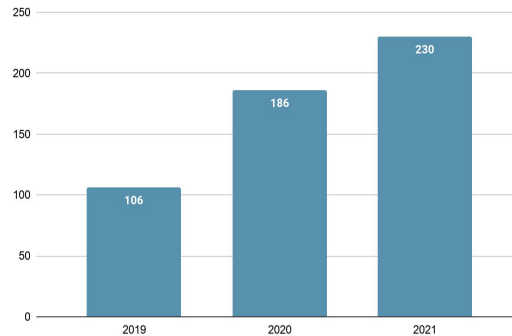
DOE School Enrollment in the Area

17,250

The Campbell-Kapolei Complex is the largest in the State and DreamHouse exists as the only growing charter school in the community.

Demand Growth for DreamHouse

Application growth during years 1, 2, and 3.



New Public School Seats

700

We aim to provide 700 families with a competitive, rigorous public school option from middle to high school.



DREAMHOUSE HIGH SCHOOL

The DreamHouse High School is coming up (July 2022) and we are planning for temporary space (2022, 2023) and permanent space 2024.

TEMPORARY:

- 3,000 - 5,000 sq ft of learning lab (Kumon, Sylvan Learning Center) type space (similar to Laulani Village) to accommodate students;
- Access to and some classes on-site at DreamHouse (following modular build-out and expansion);
- UH West O'ahu, Leeward Community College, and UH Mānoa open to DreamHouse students;
- Possible off-site / project / virtual days



DREAMHOUSE HIGH SCHOOL

The DreamHouse High School is coming up (July 2022) and we are planning for temporary space (2022, 2023) and permanent space 2024.

2021-22: Kalaeloa

2022-23: Kalaeloa + Temp

2023-24: Kalaeloa + Temp

2024- : Kalaeloa, Kapolei

PERMANENT:

- **Site identified in Kapolei.**
- Appx. 30 months to build.
- Target move in date: July 2024.
 - 2021: Close deal.
 - 2022: Permit and finance.
 - 2023: Build.
 - 2024: Finish and occupy.
- Overall financing costs to be north of \$30MM through partnership.
 - DreamHouse share: \$18MM
- Current financing approach: access capital markets via municipal bond.
- *Updates to come: Dec 2021 / Jan 2022.*

COURSES



High School:

Leadership, Identity, Academics.





High School Courses

GRADE 9

- **English Language Arts:** Language, Spirit, and Empathy (English Language Arts I)
- **Social Studies:** Hawai'i, U.S., World (Modern Hawaiian History, Participation in Democracy)
- **Mathematics:** Algebra & Modeling 1.0 (Algebra I)
- **Science:** Life Science (Biology)
- **Physical Education:** Living Fit (Lifetime Fitness + Physical Education)
- **Language:** Language I (Hawaiian + Other)



High School Courses

GRADE 10

10th Grade Social Studies: The Impact of History (U.S. History & Government)

10th Grade Mathematics: Proof & Geometry (Geometry)

10th Grade Science: Physical Science (Physics / Science)

10th Grade Holistic Health (Expository Writing & Health Today & Tomorrow)

10th Grade Language: Language II (World Language)



High School Courses

GRADE 11

11th Grade English Language Arts: Social Justice 1.0 (English Language Arts)

11th Grade Social Studies: Then to Now (World History & Culture)

11th Grade Mathematics: Algebra & Modeling 2.0 (Algebra II / Math)

11th Grade Science: Chemistry (Science)

11th Grade Language: Language III (World Language / Elective)

11th Grade Elective: Spoken Word (Drama & Theatre / Elective)



High School Courses

GRADE 12

12th Grade English Language Arts: Social Justice 2.0 (ELA)

12th Grade Social Studies: Organizing (Social Studies)

12th Grade Mathematics: Statistics & Probability (Math)

12th Grade Language: Language IV (World Language Elective)

12th Grade Senior Project (Drama / Theatre Elective)

12th Grade Personal Transition Plan / Elective)

COLLEGE ENROLLMENT

Dual credit offers DreamHouse high school students the opportunity to take college classes.

What is Dual Credit?

Dual Credit is a program that allows high school students to enroll in college classes, and earn credit toward high school graduation and a college degree.

There are several different dual credit programs in Hawai'i that academically qualified high school students can participate in. The two most common dual credit programs are Early College and Running Start. The comparison chart below outlines some of the big differences between the two programs.

Dual Credit Opportunities

	Early College	Running Start
Do I earn dual credit?	Yes	Yes
Where do I take my class(es)?	High School Campus (typically)	College campus
Who teaches my class(es)?	College professor or qualified HS teacher	College professor
Who's in the classroom with me?	Other high school students	Other college students (with a variety of ages and experiences)
Who pays for the class(es)?	High School (typically)	Varies: Student/Family, High School, or a Scholarship
What courses are offered?	High school determines course offerings (check with your high school counselor)	Listed on the UH Catalog
	Learn More about Early College	Learn More about Running Start



Dual Credit with the UH System

- DreamHouse 9th graders will have the option to take some classes at DreamHouse, and some classes at UH (West O'ahu, Leeward Community College, Mānoa);
- UH Course credit will transfer back to DreamHouse to satisfy high school graduation requirements, while also earning college credit;
- Early College + Running Start = Access
- Timeline
 - October, November, December: DH works with UH to align on course offerings
 - January, February, March: DH shares offerings with students and families;
 - April, May: Students solidify course schedule for Fall 2022 between DH/UH
- We look forward to updating you in early 2022!

EXTRACURRICULARS



Extracurricular Opportunities

MIDDLE SCHOOL (6-8)

- Intramural sports
- Student-led clubs
- 'Ohana engagement activities
- Fun(d)-raising opportunities

HIGH SCHOOL (9-12)

- High school sports
- Student-led clubs
- 'Ohana engagement activities
- Fun(d)-raising opportunities
- Internships
- Teaching Assistant (TA)
- College Initiative
- Travel (e.g. Japan)

INTERNSHIPS



Internships

- DreamHouse is committed to opening up economic and real-life opportunities for our students leaders - we know this is critical to post-secondary success.
- Local businesses, family-owned businesses, Chamber of Commerce members, and others have expressed interest in partnering to offer our student leaders hands-on, real-world experiences.
- We are committed to a flexible, college-like schedule in high school to offer our high schoolers opportunities to gain real world experience.
- For example: student may intern one day a week, in the morning and go to school in the afternoon, on the weekends and connect their real-world experiences into coursework, etc.

VISION



Vision

DREAMHOUSE 'EWA BEACH Public Charter School will become a leadership-focused public education pillar in 'Ewa, Kalaeloa, Kapolei, and Leeward communities.

Through unique partnerships and innovation, DreamHouse and aligned organizations will create a pathway for homegrown leaders to lead, serve, and impact our local community.



Thank you.

Contact:

Alex Teece | Founder & School Leader
alexteece@dreamhouseewabeach.org

