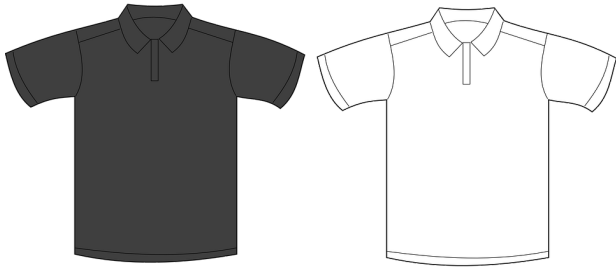


# Student Dress Code & Leadership Expectations

**School uniforms are more than just clothes - they are our team jerseys and our commitment to elevating expectations for our school, students, and the story of DreamHouse.** With many eyes on our school and students, and the story we are writing together, we realize that appearance and impressions have an impact on our learning environment and reputation within our local community. What you wear to DreamHouses matters.

Students will wear our DreamHouse team uniforms on a daily basis as part of the opportunity to make a positive, lasting impression and impact through our collective approach to appearance and dress. Our school team will notify you of any exceptions to the dress code including the potential for dress down Fridays, themed days and weeks, and special events.

Please check that your child's uniform is properly worn



- Student I.D.
- DreamHouse polo
  - *DreamHouse tee okay on Fridays only*
- Pants, appropriate shorts / bottoms
- Covered toe shoes

## Kāne Dress and Appearance Expectations

### Uniform polo tops

Daily uniforms may be comprised of the following:

- Shirts - collared, t-shirt (with DreamHouse logo, every day)
- Pants/Jeans - long, black, navy/blue, khaki, no rips, no patches no shear
- Walk shorts - black, navy/blue, khaki
- Shoes - athletic, casual, dress (no slippers; wear covered toe shoes)
- DreamHouse athletic apparel bottoms (windpants, sweatpants, athletic shorts, leggings, etc.)

## **Wahine Dress and Appearance Expectations**

### Uniform polo tops

Daily uniforms may be comprised of the following:

- Shirts - collared, t-shirt (with DreamHouse logo, every day)
- Pants/Jeans - long, black, navy/blue, khaki, no rips, no patches, no shear
- Must not be shorter than 2 inches above the knee:
  - Shorts
  - Skirts
  - Walking shorts
  - Jumper
- Shoes - athletic, casual, dress (no slippers; wear covered toe shoes)
- DreamHouse athletic apparel bottoms (sweatpants, athletic shorts, etc.)

## **Additional Dress and Appearance Expectations**

### Outerwear

Approved outerwear includes jackets, cardigans or sweatshirts in any color or design. Outerwear is to, at all times, contain appropriate logos and images that are respectful to self, school, and one another. Hoods and anything covering head or face (unless for religious purposes) is not allowed while indoors.

### Field Trips / Special Days

Regular uniforms should be worn unless the school team indicates otherwise.

### Hair

Authentic hairstyles are welcome; we request students to consider their appearance and representation of DreamHouse in the community and public as well.

### Jewelry

Jewelry is welcome so long as it is not a distraction to the student leader.

### Replacement Uniforms

Uniforms can be purchased at [www.kulathreads.com](http://www.kulathreads.com) for \$11

### Other Events

Extracurricular events, Aloha Attire, athletic events, and field trips will all carry with them unique opportunities and expectations that will be communicated well in advance.